

Hoffman Controls

Master & Slave Interconnect Wiring

744-HC and 744-HCP Step Controllers

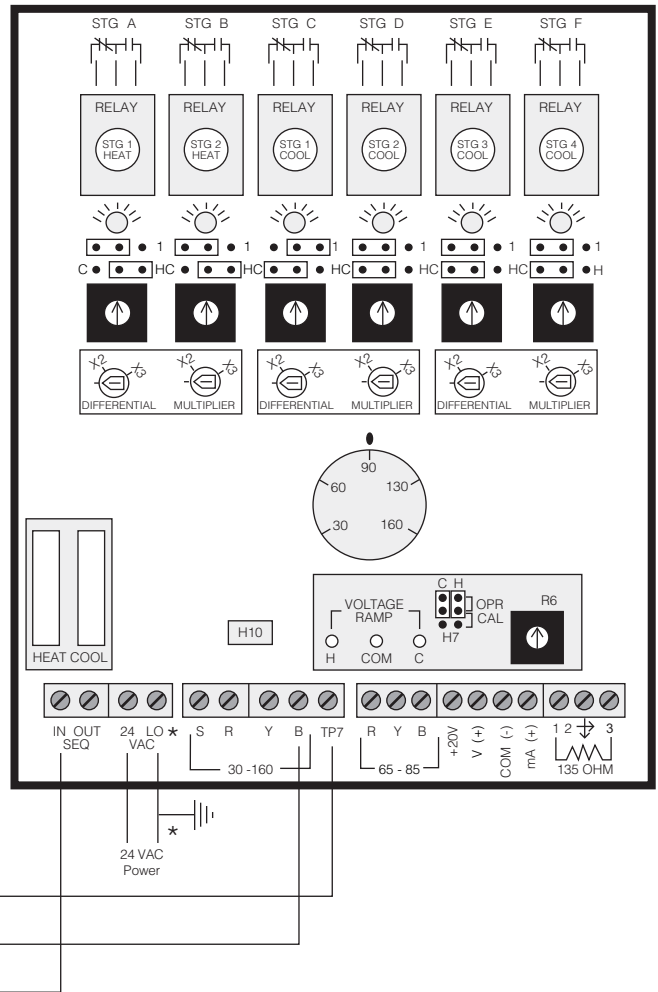
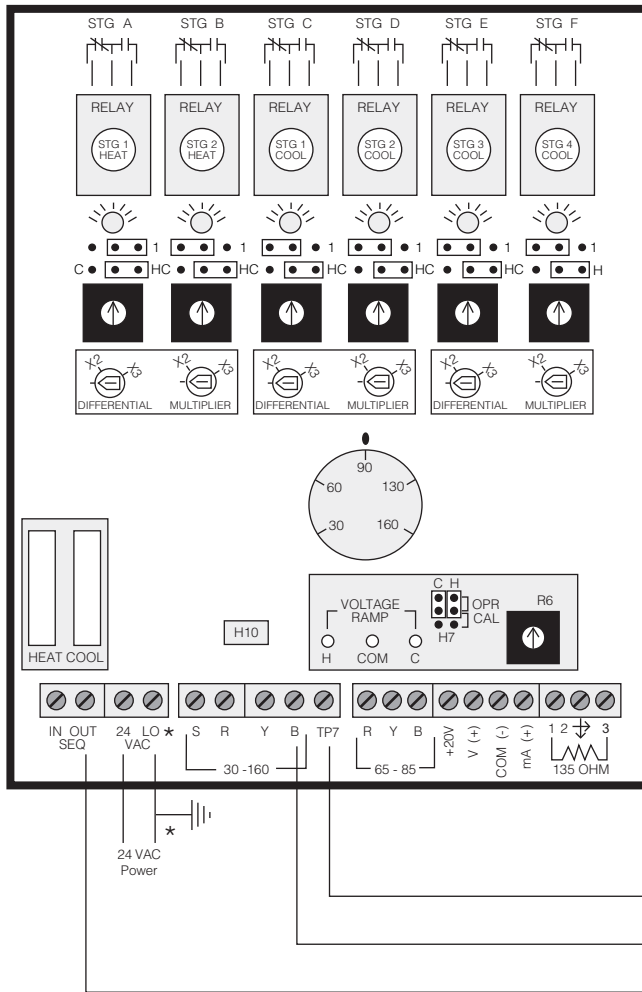


744-HC Master Steps 1 – 6

6 Stages Heat

744-HC Slave Steps 7 – 12

2 Stages Heat 4 Stages Cool



* If a 24 VAC line must be grounded, ground only the terminal marked "LO".



Important: Consult the 744 Series Engineering Bulletin, "Multiple 744 Series Step Controllers – One Input Signal" regarding the use of multiple Step Controllers available from HCC.

Master & Slave Interconnect Wiring Diagram Illustrated Showing 8 Stages Heat Followed by 4 Stages Cooling

744-HCP Master

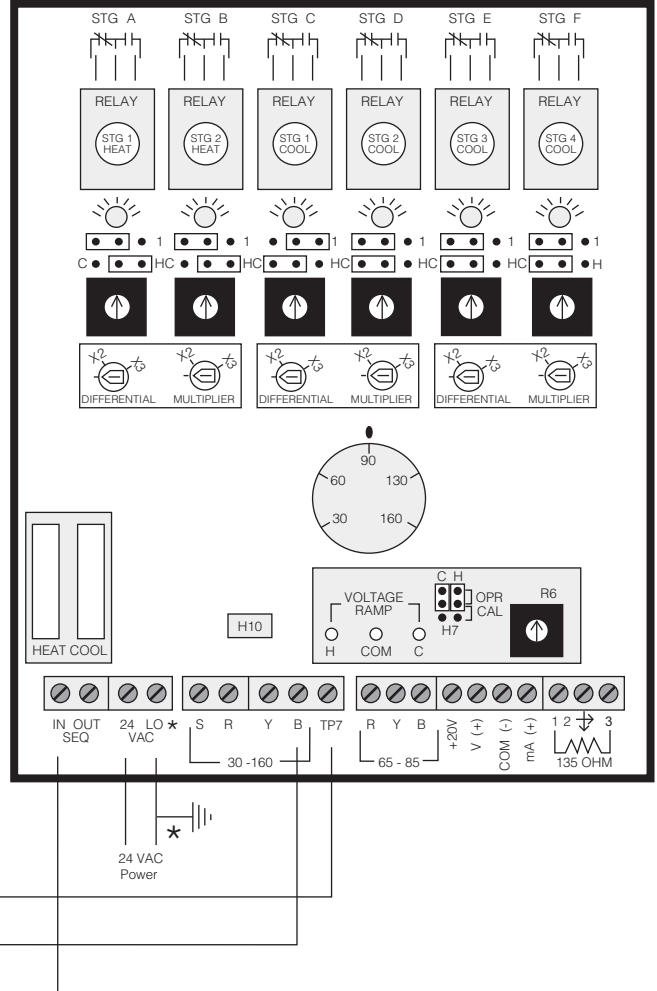
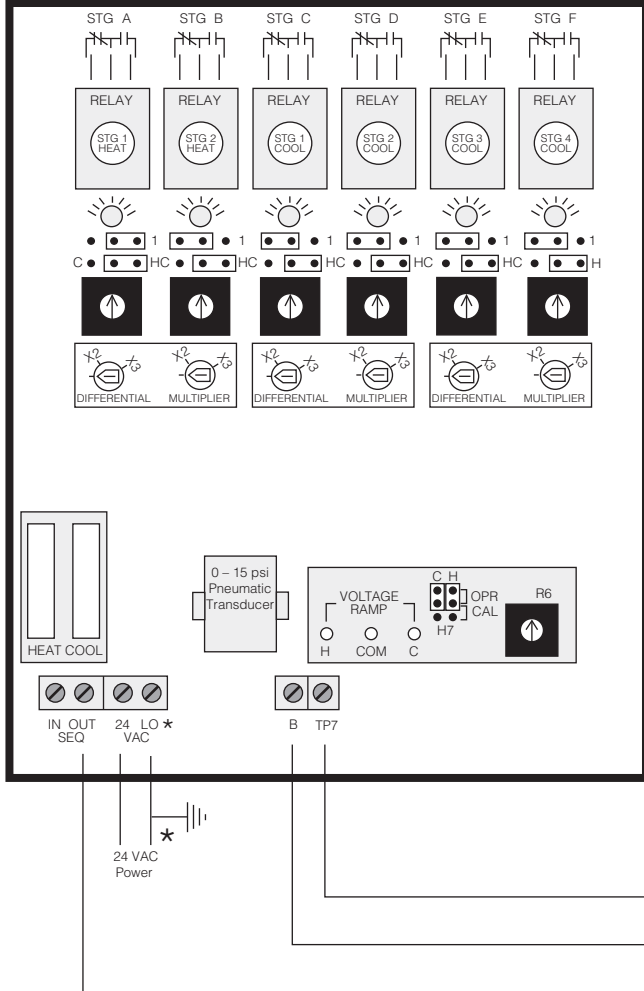
Steps 1 – 6

6 Stages Heat

744-HC Slave

Steps 7 – 12

2 Stages Heat 4 Stages Cool



* If a 24 VAC line must be grounded, ground only the terminal marked "LO".

Master & Slave Interconnect Wiring Diagram Illustrated Showing 8 Stages Heat Followed by 4 Stages Cooling

Hoffman|Controls