

Calibration Instructions

1. Connect the system as in Figure 1.
2. If 24V AC needs to be grounded, ground only Org / Blk wire.
3. The primary of T1 must be connected to the same voltage as used by the Fan Motor.
4. To adjust to a particular pressure, do the following:
 - a. Refer to the Manufacturer's chart of Pressure vs. Volts Out of his transducer.
 - b. With a digital voltmeter, connect (+) to set point terminal and (-) to transducer Blk lead.
 - c. Adjust R2 Trimmer on 205-1 until the volts reading conforms to the chart requirement of 4.a. Clockwise rotation decreases the voltage.

Note

- Do not adjust (3) Trimmers on 706-123VmA unit.
- T1 transformer draws 2VA.

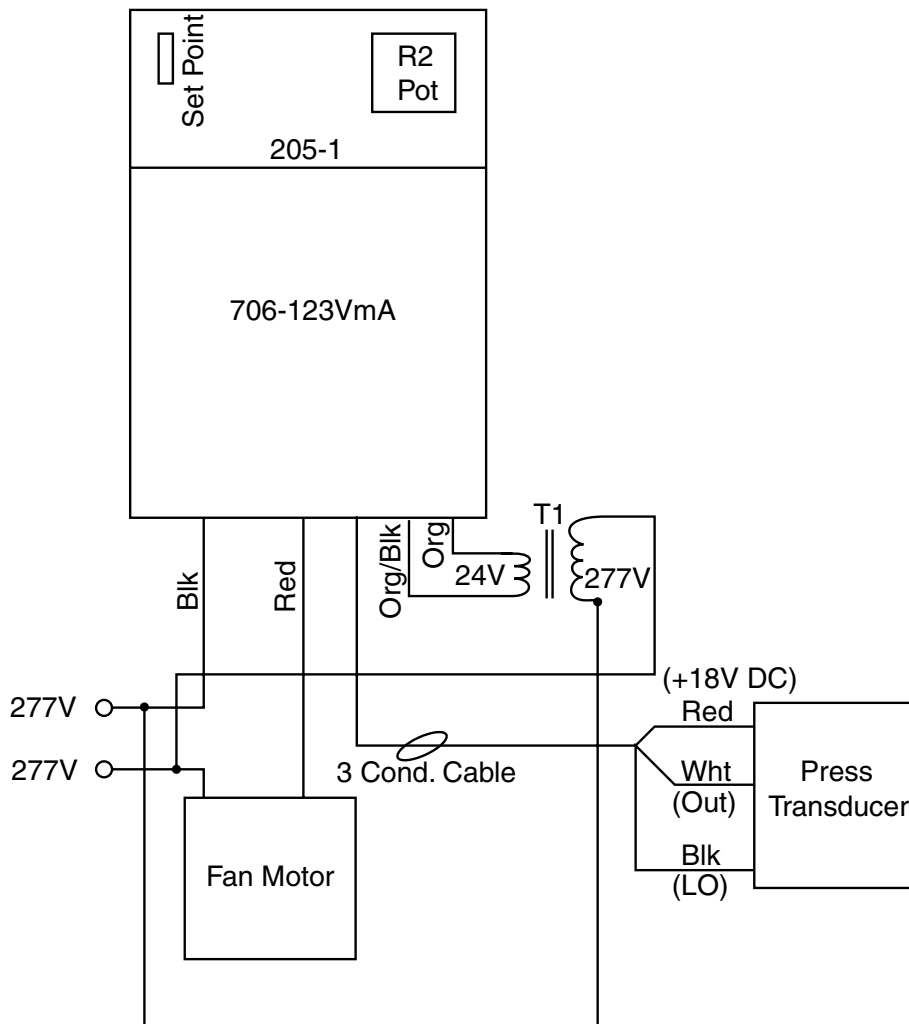


Figure 1
Wiring Diagram