

Hoffman|Controls

Product Data

760-ECM

Manual Motor Speed Controller

The 760-ECM Series Controllers are available with a finger friendly adjustment knob in a track mount package (wholesale) or a standoff mounted unit that requires adjustment via a potentiometer tool (OEM).



**760-ECM
Manual ECM Motor Speed Controller**

Description

The 760-ECM Motor Speed Controller is designed to provide manually adjustable, proportional speed control for all sizes and voltages of ECM motors. The 760-ECM is line voltage independent and requires only a 24 VAC supply.

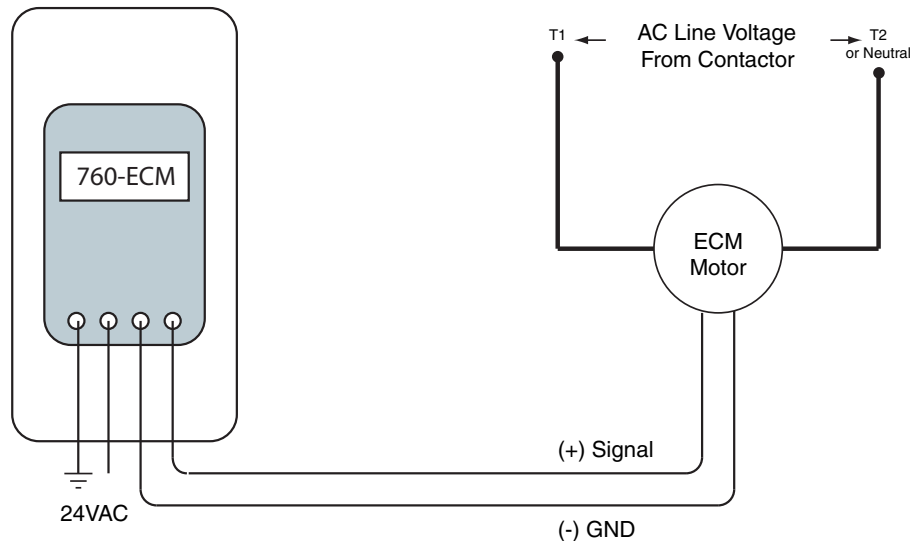
Application

Variable speed control for ECM motors is accomplished via a Pulse Width Modulated (PWM) output signal. The manual adjustment range of the control pot provides for a 0-100% PWM signal range.

The PWM signal operates at a nominal voltage level of 13.5 VDC at 80Hz. It is capable of sourcing up to 10mA drive current. This will allow for the operation of multiple ECM motors provided the maximum drive current does not exceed 10mA.

Specifications

Motor Types	ECM (dc brushless) Motors
Motor Speed	Field Adjustable
Input Voltage	24VAC (+20%/-10%)
Output	0% to 100% PWM @ 80Hz 13.5 VDC, 10mA (max.)
Humidity	95%, Non Condensing
Ambient	32° – 120° F
Dimensions (L x W x H)	4.25" x 2.40" x 1.25"



CAUTION

If a ground reference is applied to the 24VAC power source, the "grounded" lead must be connected to terminal 24V COM ONLY.

760-ECM Wiring Diagram

Hoffman|Controls